

New Holland Golf Club

Columbia Airport 35 min
Augusta Airport 35 min
Aiken Regional Jetport 13 min
Charlotte Airport 1:50 hrs
Charleston Airport 2:00 hrs
Greenville-Spartanburg Airport 2:00 hrs
Atlanta Airport 2:30 hrs
Downtown Aiken 26 min
Downtown Columbia 35 min
Downtown Augusta 35 min

Augusta National Golf Club-35 min

Nearby Golf Destinations

The Tree Farm 1 min
Old Barnwell GC 28 min
Palmetto GC 27 min
Sage Valley 24 min
Augusta CC 39 min
Aiken GC 24 min
Camden CC 65 min
Broomsedge GC 65 min
21 Club 45 min

Culture

New Holland Golf Club is seeking like minded Investors, Founders and Subscribers who want to be a part of something very cool and different. A place you can not only “bring your game” but find a game.

National Members (250 miles or more)

Regional Members(75-250 miles)

Nearby Members(inside 75 miles)

“PGA” Memberships available

“Summer” Memberships available

“Local” Memberships available for New Holland residents

As affordable membership as possible to allow diversity of individuals from all walks of life

UK model-Private with public play at certain times of day or by introduction of Members or Club Professionals

Relaxed "old school" environment

Member travel and club match opportunities via management's extensive travel backgrounds and networks

Two ball play-twosomes/Foursomes encouraged especially in early AM

Frequent, friendly, affordable Club and Open events-Monthly/Weekly medal-Foursomes

Local high school/college friendly access in shoulder seasons

Local youth caddie opportunities and training when possible and desired

Host local amateur and professional events

The Golf

Accessible, relaxed golf in a timeless rural setting where the land suggests the golf.

A club that is not only a travel destination, but a part of the local community as well.

Minimal amenities where the focus is on golf and “100% is invested in less, rather than 50% on more”

A throwback course where nature, topography, native vegetation and the intimate scale of the site are embraced, a distinctly different flavor than many modern large scale projects,a place where quirk and variety are celebrated-not bulldozed then replanted to modern conformity.

Beautiful rolling sandy soil,with sweeping meadows,unique vegetation and diverse forests
Lay of the land golf



Design

Classic architecture-Designed by acclaimed architect Brian Schneider of Renaissance Golf

His most recent project, Old Barnwell, debuted as the #45 course in the country

Greens with old school tilt, slope and commensurate speed. Not twisting internal contours with artificial tiers but rather interesting lay of the land contours sloped for drainage, thoughtful strategy and excitement

Easily walkable in season-you choose your mode(carry your own,pull,push,youth caddie, professional caddie)

Carts available for medical or age 70 and/or summer months.









Minimal Clubhouse

Intimate/rustic 2500 sf clubhouse with wraparound porches that feel like they're part of the golf (Cape Arundel like size and intimacy)

Changing shoes in parking lot fine--maybe even have a bench to make that easier!

Great room-common area-benches for shoe storage(Fisher's Island back in the day)

Minimal kitchen with limited food service similar to Palmetto GC-like a private home with upgraded M/W bathrooms with additional showers

perhaps a room or two upstairs for owner/staff/investor/member lodging/bathrooms

Small locker rooms for daily use that are just that- with luggage and valuables storage

Bar/restaurant area all in great room -small pro shop area etc.

Attractive welcoming fireplace-comfortable, intimate and welcoming seating arrangements

Pool table, Foosball, darts-Sports on TV-relaxed environment

Members and visitors small phone/laptop office/workspace area upstairs

View looking up towards Clubhouse from 18 fairway-Clubhouse to #18 fairway(below)



Reasonable maintenance schedule/budget results in MORE playability

Minimal common sense maintenance-focus on architecture, not speed of grass

grass with enough height to allow turf health and allow player to hit center of club

Minimal irrigation post grow in to promote firm bounces and interesting golf(cart traffic managed to make this possible)

Fairway height that allow balls to settle on slopes creating challenging sidehill lies

Firm fairways to encourage firm healthy dry turf -bouncy run up golf and allow for fallaway approaches and greens.Enough grass/rough behind certain fallaway greens to stop balls from going indefinitely

Native vegetation and texture-preserving what is there, which while perhaps a bit more maintenance intensive than clearing and regrassing, results in a far more diverse, varied and colorful palette.

Reasonable maintenance(not trying to touch every surface before first groups goes out allows earlier play)

Greens dew whipped or mowed ahead of early groups but the rest as schedule allows.

Minimal bunkering but meaningful-places to be avoided-not photographed

Game improvement

Jeff Warne-Top 100 Teacher in the USA

Short game area near clubhouse(behind first tee)

Putting green part of 9th green or near clubhouse between 9 and 18 green

Warmup nets near first tee

Potential range area from leasing/purchase 10-12 acres next door and/or tee near clubhouse to hit balls into 18 fairway(or into mown native between 10 and 18 depending upon aesthetics/demand and available additional land)

Multiple 3-10 hole loops from clubhouse as mentioned above

The Team

Jeff Warne-owner/GM Director of Golf The Bridge Top 100 Teacher

Kyle Harris-Superintendent/Project manager Former Superintendent Streamsong, Sandglass

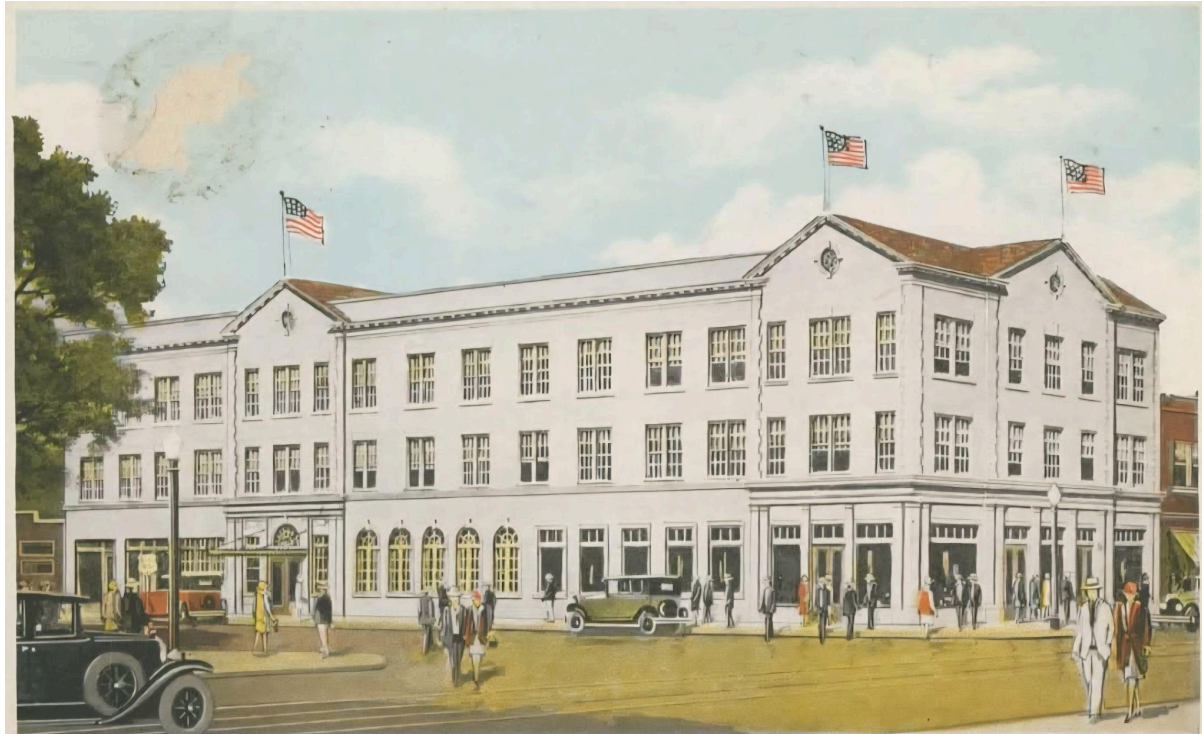
Brian Schneider-architect Old Barnwell-Lead Associate on Multiple Top 100 courses with Renaissance Golf



The Destination-Aiken County South Carolina

<https://www.top100golfcourses.com/golf-travel/aiken-golf-course-travel-guide>

Aiken and the surrounding sandhills have rapidly become the hottest destination golf area in the country, with highly acclaimed newer builds Old Barnwell, The Tree Farm, The 21 Club and Sage Valley complementing century old classics Palmetto and Aiken Golf Club. Aiken is a richly diverse destination, offering multiple equestrian options including thoroughbred racing, a rich arts scene and a vibrant historic downtown center.





h



<https://archive.nytimes.com/therail.blogs.nytimes.com/2013/06/09/aiken-a-special-place-where-the-horse-rules/>

